

THE INSTITUTION OF STRUCTURAL ENGINEERS
ONTARIO REGIONAL GROUP

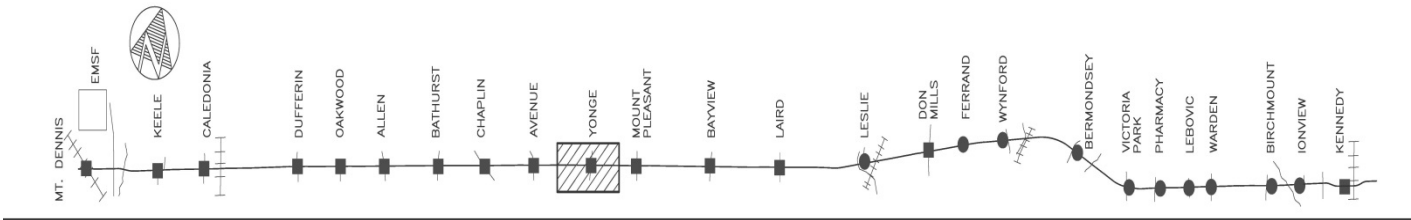
CHAIR: CHANDRU G. HIRA
email: hiracg@rogers.com

Annual Report

LECTURES & EVENTS 2016

The following lectures took place in 2016:

1. Construction of the Eglinton Crosstown Subway
Date: March, 2016
Venue: The Yellow Griffin Pub
Speakers: Brian Garrod P. Eng.
Synopsis: The speaker presented the planning stages for zeroing in on the final scheme and the final go ahead of the project
Attended by: 60 people



Plan of Subway Line

2. Design of Deep Excavations Beside Existing Subway Structures

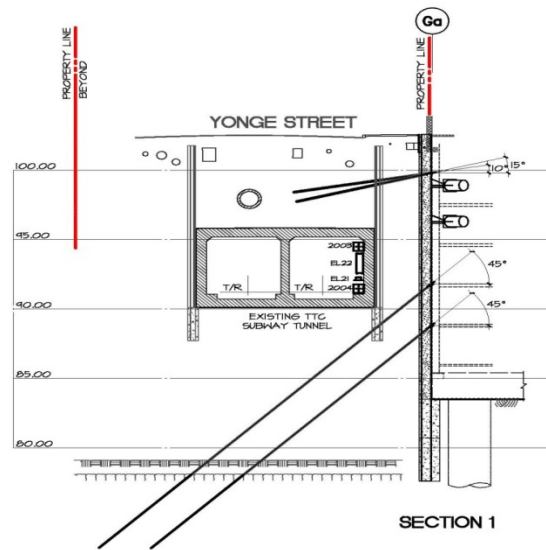
Date: April 5, 2016

Venue: The Pit at Ryerson University

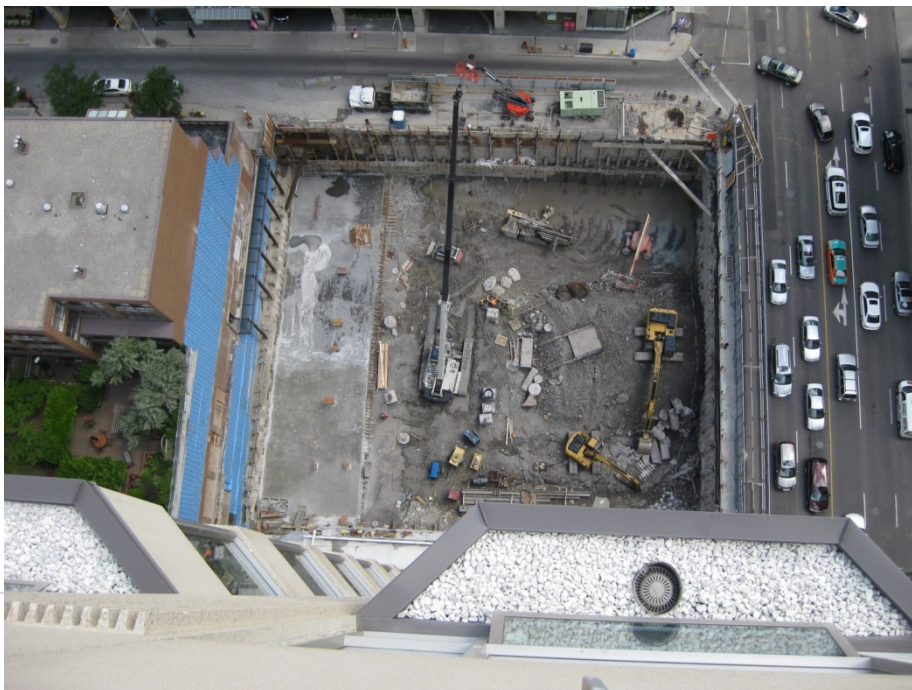
Speakers: Brian Isherwood P. Eng, MICE & Thomas Fiala P. Eng.

Synopsis: Description of the challenges and solutions used in the design of such excavations.

Attended by: 70 people



Typical Section (above)
Aerial view of shoring (below)



3. Design of the Repairs to the Champlain Bridge in Quebec

Date: June 7, 2016

Venue: The Auditorium at the Lillian Smith Library

Speaker: Francios Demers P. Eng. & Glen Patrick Carlin P. Eng.

Synopsis: the speakers outlined the design of beams and trusses and their installation to repair the bridge which had deteriorated in its load carrying capacity due to corrosion of the pre-stressing cables.

Attended by: 40 people.



Typical Beam

I also attended 2 council meetings in London, one in January and one in July.

Council consists of the chair of all the various regions. The group is divided into 3 sections.

- a) English Regions
- b) International Groups
- c) Young Members Group

The international group consists of 30 or so members, covering countries from China to Canada including the Middle East (wherever I- Struct.E has presence). Discussions are held on the work of each region and suggestions for future thoughts.

Finally I would like to thank all members who attended our lectures and the committee members for their hard work which made the lectures a success.

THANK YOU

END OF REPORT