

# Humanitarian and International Development resource map

**Short Reads**  
Housing, Land, and Property in Shelter Programs (*Cornerstone OnDemand Foundation*)

**Longer Reads**  
2022 State of Humanitarian Systems report (*ALNAP*)  
*The State of the Humanitarian System report assesses the size, shape and performance of the humanitarian system against key criteria over time. It is independent and based on evidence from on-the-ground practitioners, crisis-affected populations, academics, policy-makers and donors.*

Integrating Housing, Land and Property Issues into Key Humanitarian, Transitional and Development Planning Processes (*International Organization for Migration*)

**Development and humanitarian concepts and practices**

**Websites**  
CARE Emergency Toolkit  
Shelter self-recovery  
CCCM cluster (Camp Coordination and Camp Management)

**Longer Reads**  
Pinheiro Principles 2005 (*Shelter Cluster*)  
Settlements approaches in urban areas (*Global Shelter Cluster*)  
UNHCR shelter, camp and settlement guidelines (*UNHCR*)  
Engineering in Emergencies (*RedR*)

**Career Profiles**

**Websites**  
Career Profiles (*IStructE*)

**Global agendas and frameworks**

**Websites**  
The Grand Bargain (*IASC*)  
UN Sustainable Development Goals (*UN*)  
Global Shelter Cluster

**Websites**  
Humanitarian Standards Partnership  
Core Humanitarian Standards Alliance (*CHS Alliance*)

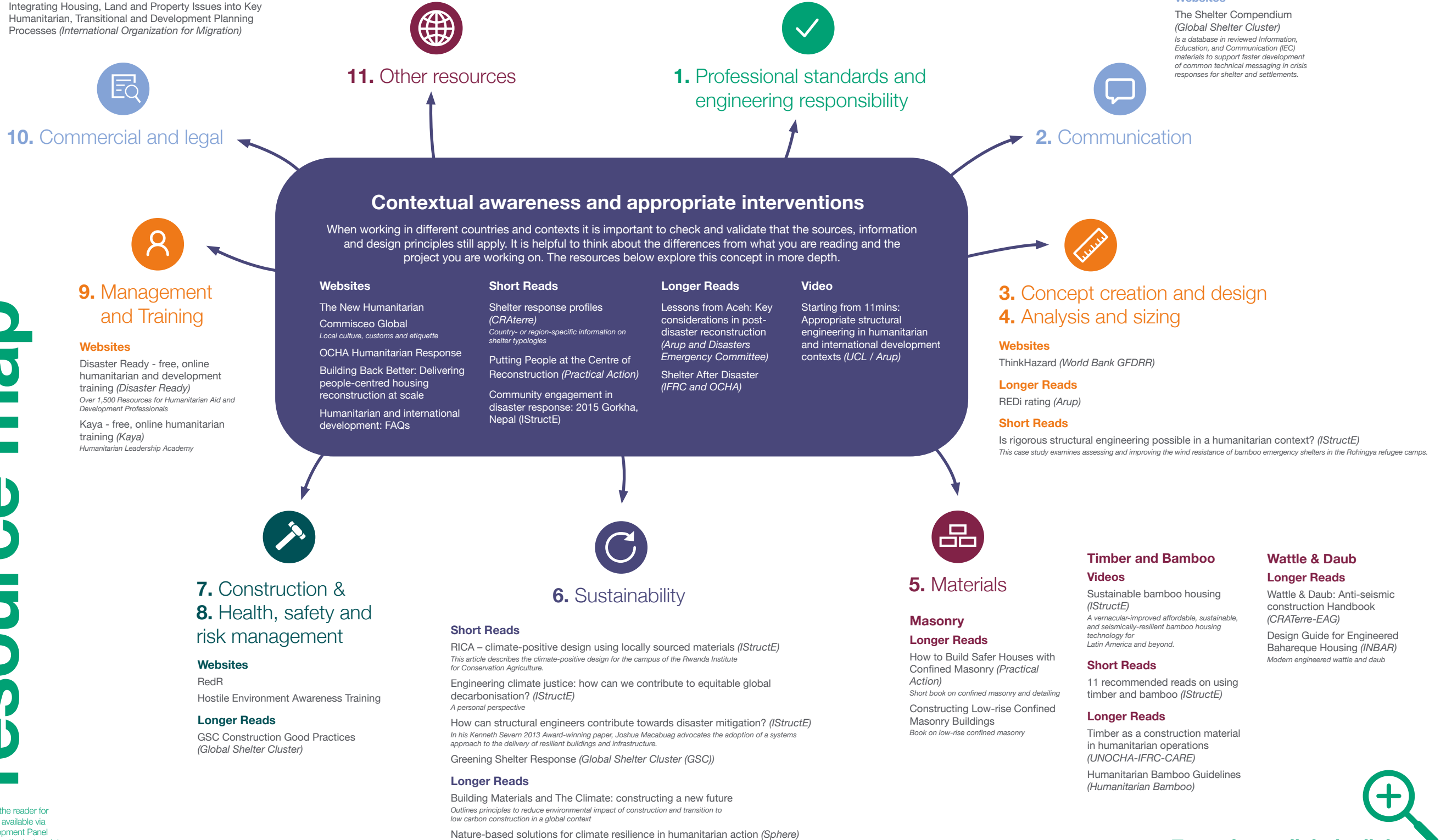
**Short Reads**  
Working in the humanitarian or development sectors (*IStructE*)  
*This article provides a realistic overview of the practical and ethical considerations when seeking to work in the sector.*

Humanitarian and international development competencies framework (*IStructE*)  
*This framework, developed by the Institution's Humanitarian and International Development Panel, is designed to illustrate the types of skills that structural engineers will require to be successful in the development sector.*

**Longer Reads**  
Humanitarian Civil Engineering: Practical solutions for an interdisciplinary approach (*ICE*)  
*This book allows you to understand the significance of humanitarian civil engineering and how to develop sustainable solutions that integrate social, environmental, cultural, and economic systems.*

The Sphere Handbook (Sphere)

**Websites**  
The Shelter Compendium (*Global Shelter Cluster*)  
*Is a database in reviewed Information, Education, and Communication (IEC) materials to support faster development of common technical messaging in crisis responses for shelter and settlements.*



**Please Note:** These resources are highlighted to the reader for their potential value/interest. Further resources are available via the IStructE Humanitarian and International Development Panel webpage, as well as new resources published since the last update to the resource map. Some have been produced by third parties. The Institution of Structural Engineers does not necessarily endorse (nor is it responsible for) any statement or opinion expressed within these.

Zoom in to click the links and use Ctrl+F to search