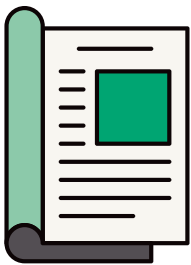


What you told us about *The Structural Engineer*

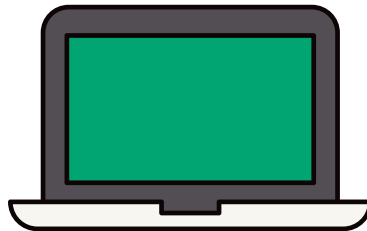
Thank you to everyone who took part in *The Structural Engineer* reader survey earlier this year. We received a great response, with **956** of you taking the time to complete it. The spread of respondents reflected the Institution's international membership: **60% were based in the UK** and **40% outside the UK**; the largest categories were **Chartered Members (31%)**, **Graduate Members (28%)** and **Student Members (10%)**. Here's what you told us...

READING HABITS

How do you read *The Structural Engineer*?



In print
42%



Online
32%

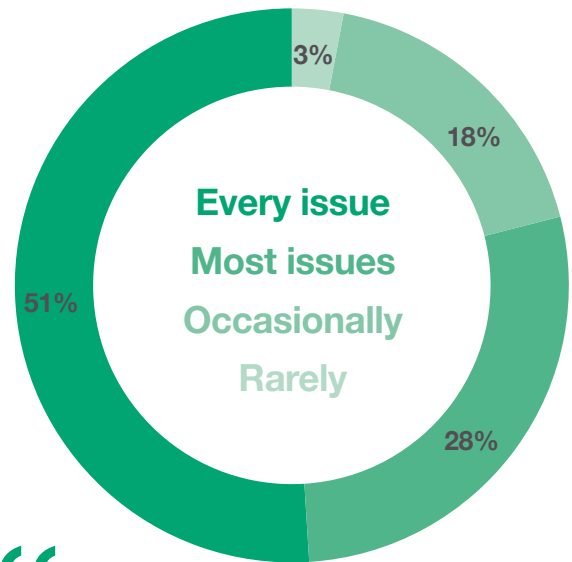


Both
23%



I don't read it
3%

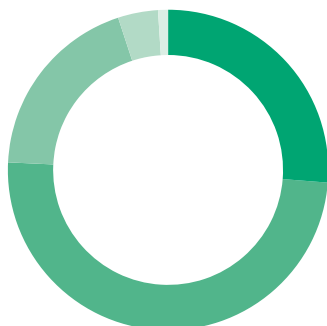
How often do you read it?



“ I WOULD LIKE THE OPTION TO OPT IN OR OUT OF THE PAPER VERSION ”

CONTENT

Overall rating

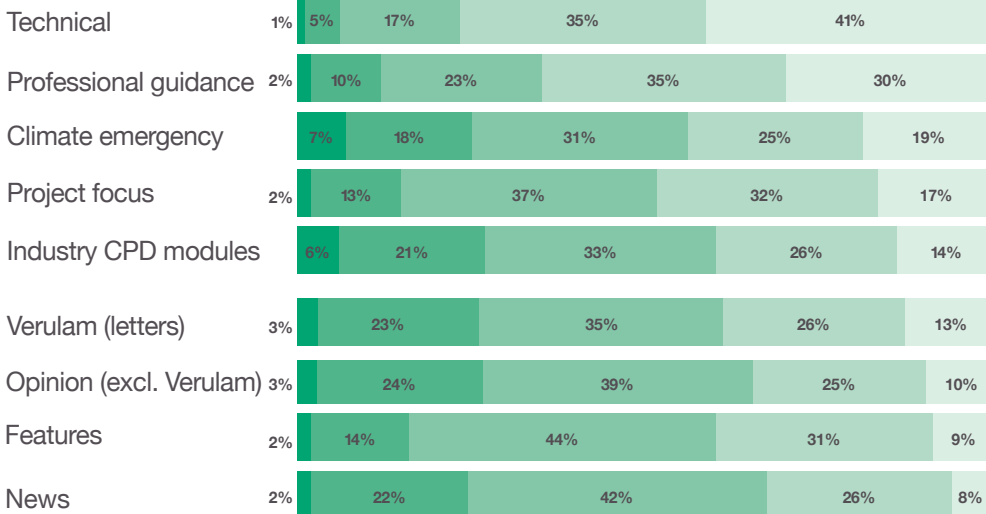


Excellent 26%
Very good 49%
Good 19%
Average 4%
Poor 1%

What you'd like to see more of...

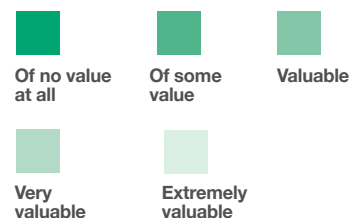
- ✓ technical content and guidance notes
- ✓ smaller 'ordinary'/residential projects
- ✓ low-carbon design
- ✓ sketches and structural behaviour problems
- ✓ failures and their causes
- ✓ industry news
- ✓ digital design techniques

Most popular sections



“IT IS AN OUTSTANDING PUBLICATION. PLEASE KEEP UP THE EXCELLENT STANDARD”

KEY



ONLINE

How often do you access *The Structural Engineer* website?

At least once a week **20%**

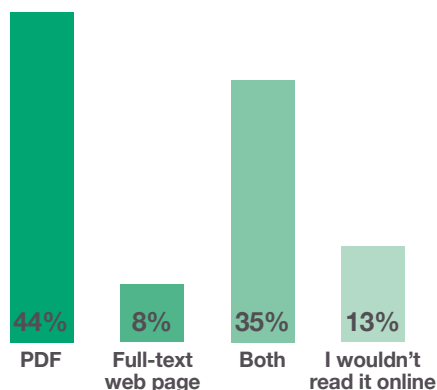
At least once a month **37%**

At least once every three months **21%**

Less often **17%**

Never **5%**

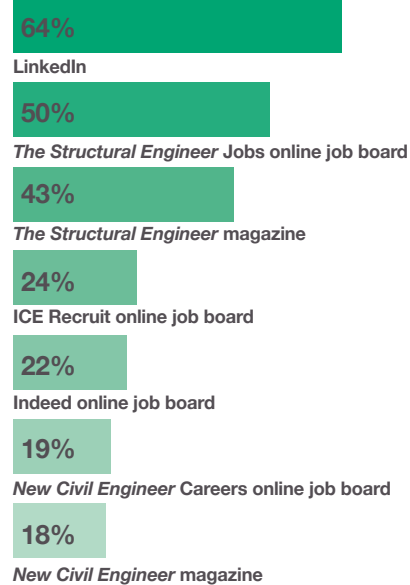
How would you prefer to read *The Structural Engineer* online?



“THE SEARCH ENGINE NEEDS IMPROVING”

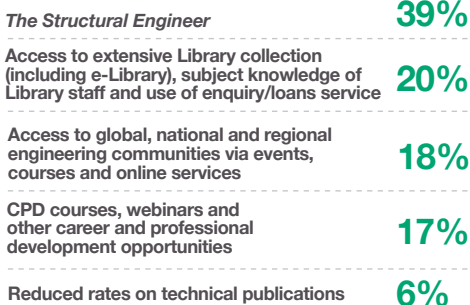
CAREERS

If you were looking for a new job, which publications or online job sites would you consult?

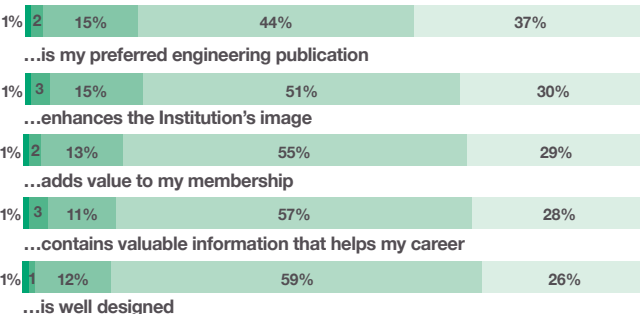


VALUE TO INSTITUTION MEMBERS

Most valuable member benefit



The Structural Engineer...



KEY

