

Access to *Structures* is free to paying-grade Institution members as one of their membership benefits, via the 'My account' section of the Institution website. The journal is available online at: www.structuresjournal.org

Spotlight on *Structures*



Read the latest issue

Don't forget that Volume 32 of *Structures* is available to read at www.sciencedirect.com/journal/structures/vol/32.

Editor-in-Chief, Leroy Gardner, has selected a paper on side plate connections in an S-CFST column frame under a column-loss scenario as his 'Featured Article' from this issue. The article will be available free of charge for six months.

Editor-in-Chief's Featured Article

Investigation of side plate connections in an S-CFST column frame under a column-loss scenario

Wang Zhang^{a,b}, Shiyang Jia^a, Qingqing Xiong^{a,b}, Zhihua Chen^b, Hongbo Liu^b, Tiancheng Su^c, Qianzi Du^a

^a School of Civil Engineering, Shijiazhuang Tiedao University, Shijiazhuang, Hebei Province, China

^b Department of Civil Engineering, Tianjin University, Tianjin, China

^c Dali Construction Group Corporation Limited, China

Abstract

The progressive collapse resistance of four full-scale special-shaped columns composed of concrete-filled steel tubes (S-CFST column)-steel beam assemblies was studied in this paper. The failure modes, deflection profiles, vertical resistance development mechanisms and internal force development at the assumed plastic hinge section under the influence of infilled concrete, various span-to-height ratios of the steel beam and different connection details were compared. The test results showed that the fracture failure of all the specimens

first occurred near the full penetration weld of the bottom beam flange or the bottom cover plate at the end of the side plate. Fracture failure of the steel beam web or shear plate occurred through the bolt holes. The beam chord rotation ranged from 0.055 to 0.088. The concrete infilled steel tube improved the ductility of the assembly and resulted in the development of the catenary mechanism, while reducing the span-to-height ratio of the steel beam resulted in the delay of the initiation of the mixed mechanism stage. Additionally, the development of the catenary mechanism was more sufficient for the specimen with the concrete infilled steel tube than the specimen without the concrete infilled steel tube under the same vertical displacement. The results showed that the ACPSP connection can avoid premature fracture of the full penetration weld and improve its progressive collapse resistance. By reducing the span-to-height ratio of the steel beam and using the ACPSP connection, the beam-column assemblies experienced not only the flexural and mixed mechanism stages but also the catenary mechanism stage. The GSPCP connection was proposed to improve the stress concentration in the ACPSP connection. Through further analysis by the verified finite element model, it is evident that the GSPCP connection can further improve the progressive collapse resistance of the S-CFST column-steel beam joint assembly.

→ Read the full paper at <https://doi.org/10.1016/j.istruc.2021.03.039>

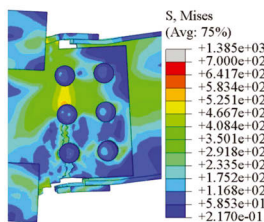
IF 2.983

Structures sees big jump in Impact Factor

Structures has achieved a steep rise in its Impact Factor in the 2021 Journal Citation Reports. The journal's new Impact Factor is 2.983, an increase of 62% on the previous year's score. The new value lifts *Structures* to a ranking of 55th out of 136 journals in the civil engineering field.

The Impact Factor reflects how often papers published in a journal are cited by researchers in other published work, and is an important indicator of a journal's quality.

Structures has grown rapidly since its launch in 2014, with 2277 submissions received in 2020 and 802 papers accepted for publication.



Register for alerts

If you'd like to receive regular updates about new content in *Structures*, register for email alerts at www.sciencedirect.com/.